

RBH ROADMAP OUT OF LOCKDOWN

RBH ALL TOGETHER
BETTER LIVING

The Government have announced their “roadmap out of lockdown” and we want to let you know when we are planning to make changes to RBH services and locations.

Our service changes will mirror the Government guidance, and may be subject to change if Government advice is changed.

Our latest Coronavirus updates are available at www.rbh.org.uk/coronavirus.



ON 29TH MARCH...



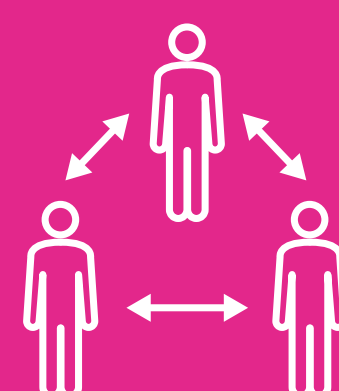
We'll recommence some **non-urgent outdoor repairs** such as fencing and roof repairs.



We'll restart our **electrical inspection programme** and our **asbestos surveys**.



Communal gardens will fully reopen at our Independent Living Schemes, with social distancing in place.

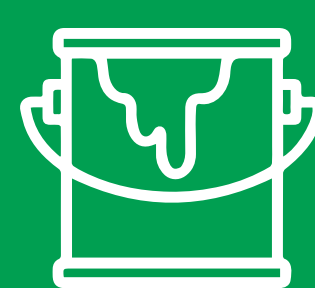


Our **team members** can meet up outside for team catch-ups whilst maintaining social distancing and the “rule of six”.

ON 12TH APRIL...



We'll operate a **full repairs service** - we're very grateful for your patience and understanding as our teams work to clear the backlog of appointments and continue to work safely.



The RBH **Paint Shop** will reopen.



The hair salon at Hare Hill will reopen and **hairdressers will be allowed in to our ILS schemes** with appropriate safety measures in place.

ON 17TH MAY...



The **pantry schemes** will reopen fully with no requirement to queue outside.



Visiting restrictions at Hare Hill, Independent Living Schemes, and College Bank will end.



Reception at the **Strand Hub** will reopen.



We'll reintroduce **some home visits and face-to-face meetings**, with social distancing in place, but only where it is safe and tenants are happy to do so.



Indoor spaces, such as the communal spaces in our Independent Living Schemes, will reopen in line with social distancing guidance.

ON 21ST JUNE...



We'll resume **home visits and in-person viewings**, subject to the vaccine roll-out continuing on schedule.



Community facilities and community bases can reopen for regular use.



Our teams will be able to resume **in-person meetings**, in line with guidance.



St Alban's House will remain closed as we develop plans to provide a service that is accessible for all residents of the Borough of Rochdale who need it.